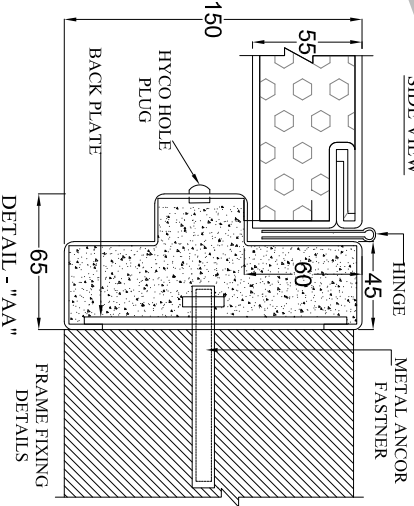
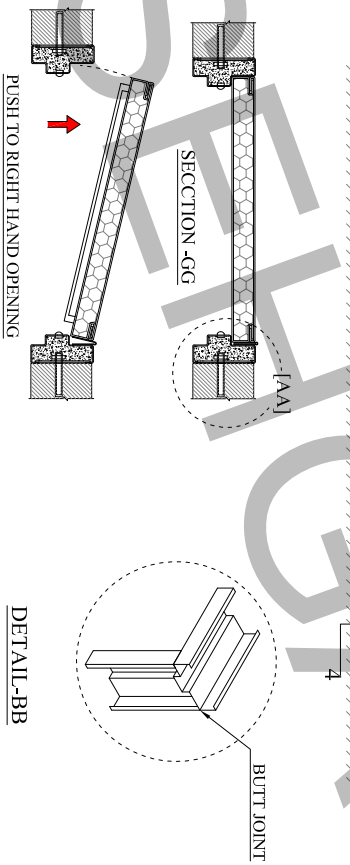
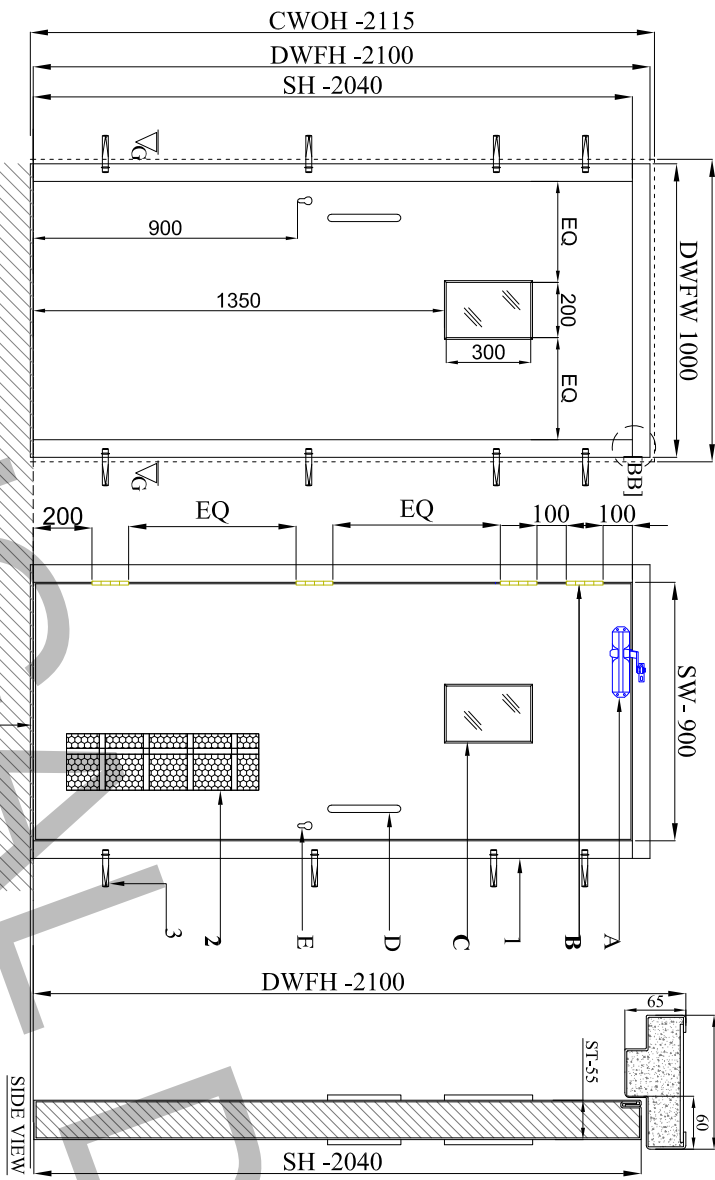


PUSH SIDE ELEVATION  
CWOH -1010  
DWFH -1010

PULL SIDE ELEVATION  
SW - 900



QTY. :- nos  
SIZES :- 1000X2100  
2 Hrs. FIRE RATED

**MATERIAL DETAILS:-**

|                         |                  |
|-------------------------|------------------|
| DOOR FRAME SHEET THICK. | 1.6 MM G.I SHEET |
| STIFFNER SHEET THICK.   | 1.2 MM G.I SHEET |
| SHUTTER SHEET THICK.    | 1.2 MM G.I SHEET |
| INSULATION              | CERAMIC          |
| FINISH                  | POWDER COATED    |

**PROFILE DETAILS:-**

|  |                |
|--|----------------|
| 1. DOOR FRAME                          | 150 mm X 65 mm |
| 2. INTERNAL STRUCTURE OF DOOR SHUTTER  | 55 mm THICK    |
| 3. PROVISION FOR METAL ANCHOR FASTENER | 8 nos          |
| 4. THE BAR                             | 1              |

**HARDWARE DETAIL:-**

| S. NO. | NAME                                 | BRAND     | QTY |
|--------|--------------------------------------|-----------|-----|
| A      | SURFACE MOUNTED DOOR CLOSER          | DAUERHAFT | 1   |
| B      | SS BALL BEARING HINGES (4"x3"x3mm)   | DAUERHAFT | 4   |
| C      | VISION PANEL 6mm THICK               | WIRED     | 1   |
| D      | D-TYPE HANDLE                        | DAUERHAFT | 1   |
| E      | MORTISE DEAD LOCK WITH 80mm CYLINDER | DAUERHAFT | 1   |

**NOTE:-**

1. CWOH - CLEAR WALL OPENING WIDTH
2. DWFH - DOOR WITH FRAME WIDTH
3. SW - SHUTTER WIDTH
4. CWOH - CLEAR WALL OPENING HEIGHT
5. DWFH - DOOR WITH FRAME HEIGHT
6. SH - SHUTTER HEIGHT
7. ST - SHUTTER THICK



PROJECT:-  
LOCATION:-  
Checked By:- JITENDRA  
SIGNED:-  
APPROVED BY:- NEERAJ SEHGAL  
SIGNED:-  
CLIENT APPROVAL:-

Drawn:- ARMAN  
Date :- 30-05-2020  
Scale  
Units : Millimeter  
Dwg No.  
REV. 0  
Tolerance  
4.5mm