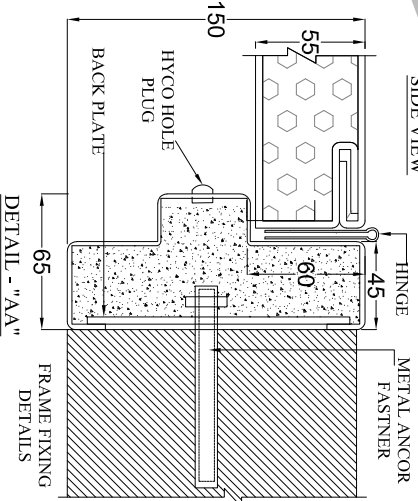
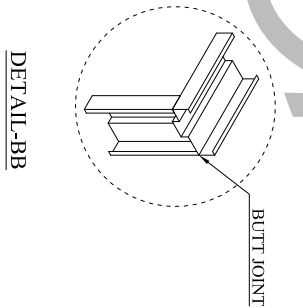
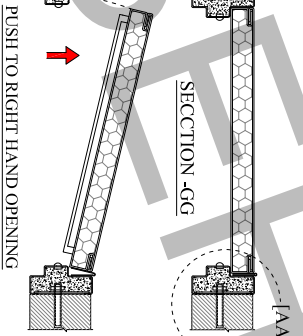
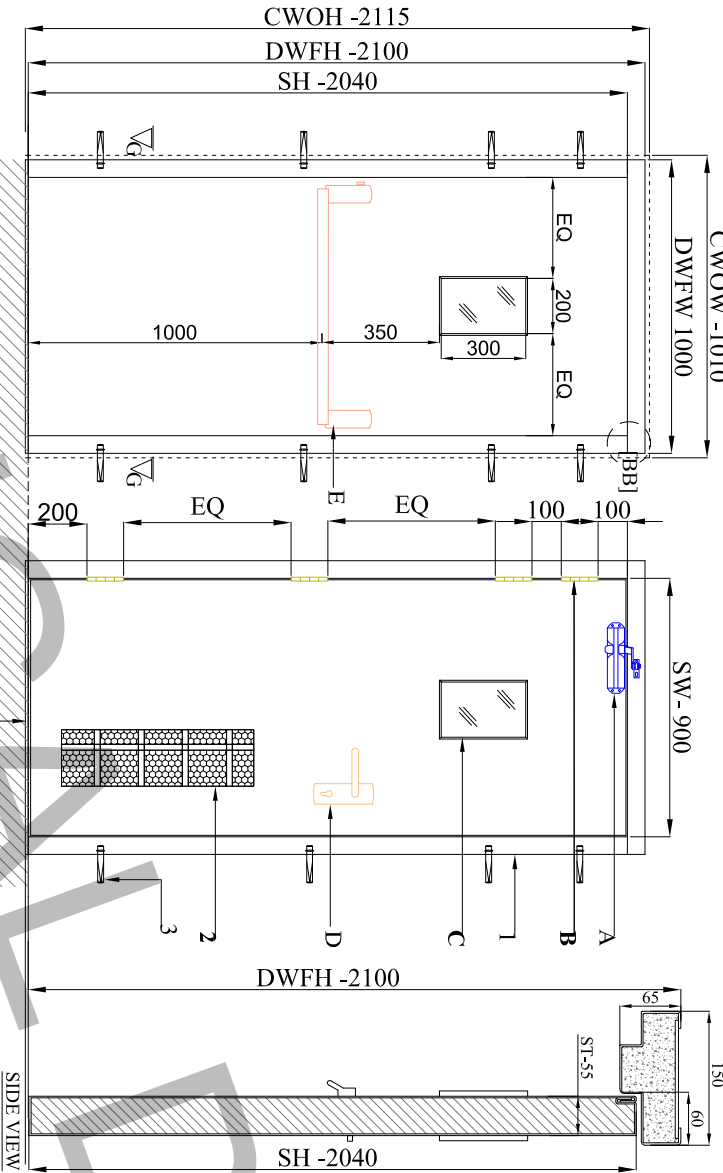


PUSH SIDE ELEVATION  
CWOH -1010  
DWFH -1000

PULL SIDE ELEVATION  
SW - 900



QTY. :- nos  
SIZES:- 1000X2100  
2 Hrs. FIRE RATED

**MATERIAL DETAILS:-**

|                         |                  |
|-------------------------|------------------|
| DOOR FRAME SHEET THICK. | 1.6 MM G.I SHEET |
| STIFFNER SHEET THICK.   | 1.2 MM G.I SHEET |
| SHUTTER SHEET THICK.    | 1.2 MM G.I SHEET |
| INSULATION              | CERAMIC          |
| FINISH                  | POWDER COATED    |

**PROFILE DETAILS:-**

|  |                |
|--|----------------|
| 1. DOOR FRAME                          | 150 mm X 65 mm |
| 2. INTERNAL STRUCTURE OF DOOR SHUTTER  | 55 mm THICK    |
| 3. PROVISION FOR METAL ANCHOR FASTENER | 8 nos          |
| 4. THE BAR                             | 1              |

**HARDWARE DETAIL:-**

| S.NO. | NAME                               | BRAND     | QTY |
|-------|------------------------------------|-----------|-----|
| A     | SURFACE MOUNTED DOOR CLOSER        | DAUERHAFT | 1   |
| B     | SS BALL BEARING HINGES (4"X3"X3mm) | DAUERHAFT | 4   |
| C     | VISION PANEL 6mm THICK             | WIRED     | 1   |
| D     | EXTERNAL TRIM                      | DAUERHAFT | 1   |
| E     | ONE POINT PANIC BAR                | DAUERHAFT | 1   |

- NOTE:-**
1. CWOH - CLEAR WALL OPENING WIDTH
  2. DWFH - DOOR WITH FRAME WIDTH
  3. SW - SHUTTER WIDTH
  4. CWOH - CLEAR WALL OPENING HEIGHT
  5. DWFH - DOOR WITH FRAME HEIGHT
  6. SH - SHUTTER HEIGHT
  7. ST - SHUTTER THICK



PROJECT:-

LOCATION:-

Checked By :- JITENDRA SIGNED:-

APPROVED BY :- NEERAJ SEHGAL SIGNED:-

CLIENT APPROVAL:- SIGNED:-

Drawn :- ARMAN Date :- 30-05-2020

Title :- METAL FIRE DOOR 1000X2100

Dwg No. FDI REV. 0

Scale NTS

Units : Millimeter

